

**BETHESDA  
OUTREACH  
MINISTRIES**

a ministry of  
Evangelical Baptist Missions  
**ebm**

*“Defend the cause  
of the weak  
and fatherless;  
maintain the rights  
of the poor  
and oppressed.  
Rescue the weak  
and needy;  
deliver them  
from the hand  
of the wicked.”  
Psalm 82:3-4*

**Inside this issue:**

Home for Christmas	2
A Bicycle Built For Two...	2
Shop CUM Christian Bookstores This December!	3
Child Care Registration Update	3
From the Lips of Children	3
Photo's: Admin Building Construction	4
Opportunities	4
Calendar of Events	4

# Raised to Praise



November 2006 Newsletter

## One Step At a Time

Several weeks ago the *Pretoria News* came out with an article entitled “No Help for Millions of AIDS Children.” The article gave new statistics that show how the orphan crisis continues to worsen:

- In the province of Gauteng there are 32,488 child-headed homes
- 80% of all children in the developing world who have lost a parent to HIV/AIDS live in Sub-Saharan Africa
- By the year 2010 it is expected there will be 3.2 million orphans in South Africa alone

There is not a day that goes by that I don't cry out to God for wisdom to know how we as a staff can facilitate caring for more orphans. In our Annual General Meeting held on October 13<sup>th</sup>, Bethesda's Board of Directors and Members discussed how we can strategically encourage and assist local churches in a greater way to help the huge orphan crisis caused by HIV/AIDS. This is a problem that is not going to go away and we need believers to take hold of the divine directive found in James 1:27 to care for the orphans in their distress.

Sadly, I talk to people everyday who ask the question, “Where do we begin to make a difference with a problem so large?” My answer to them is this; “One step at a time...we have a mighty God who cares about the children.”



When Jesus was here on earth He appointed twelve men to make disciples; those men are still impacting our world today. In light of that, I believe that as we partner together, we can raise a generation of children who were once orphaned with no hope, who were hungry and thirsty both physically and spiritually, but who are now being raised to praise the King of kings and can someday leave Bethesda as leaders who impact their world for Christ.

I would ask that you consider what God would have you do to help the orphans of South Africa. This year our Thanksgiving/Christmas project is to raise \$220,000.00 to build another childcare home. If we all do a little we can accomplish much for the Kingdom of God.

For his glory,

*John*

FOR THE  
BETHESDA TEAM

**Bethesda**  
OUTREACH  
*Compassionate Care for African Orphans*

## A Home for Christmas

### Offering You an Opportunity to Assist in Meeting the Needs of Orphans

With 1.2 million children currently orphaned in South Africa, and over 32,000 child-headed households in Bethesda's location of the Gauteng Province alone, one has to wonder about Christmas this year. What will their Christmas be like, these children who are caring for children? Will it be a celebration of the Life-Giver coming to give us life eternal? Or will it be one more day struggling to find food, keep the younger siblings alive, and wondering about how to endure the future? What would it be like to give even a few more of those children a real home—one with a mommy and a daddy that desire to teach them God's love and comfort and guide them in discovering the true life that He wants to give them in unimaginable abundance!

This Christmas season, we invite you to make that thought a reality. Our goal is to build another child care home in 2007, enabling us to meet the needs of more children who are in desperate need. The cost of this home is \$220,000.00 (R1.3 million). We ask that you prayerfully consider what part God may have you to play in helping Bethesda expand the ministry to the orphans that surround us. Donations to this project can be given in the following ways:

- If you live in the States, you can go to [www.ebm.org](http://www.ebm.org) and follow the links to give online to Bethesda's "Home for Christmas" project; or you can send a check made out to "Evangelical Baptist Missions" to EBM, Bethesda Outreach, PO Box 781438, Indianapolis, IN, 46278—include a note designating the gift for the "Home for Christmas" project.
- If you live in South Africa, you can give using the banking details on Page 4. Drop us an email to let us know of the gift's designation.



## A Bicycle Built for Two... (or Rather Twenty)!!

The Bethesda kids were absolutely delighted recently to be presented with lots of new bikes they could ride! Through the generosity of two donors, the children were given new two-wheelers from training wheel size all the way up to teenage size! The children have really enjoyed riding the bikes

after school each day, and it's been a blessing to see them taking pleasure in the physical exercise of spinning their wheels.



## Shop CUM Christian Bookstores this December!

### A Local Business Partners with Bethesda's Children's Village

God really blessed Bethesda recently when CUM Christian Bookstores, a large bookstore chain throughout South Africa, arranged to partner with Bethesda for the month of December in commemoration of World AIDS Day. During December, CUM will be putting a portion of the profits from their Christmas sale items toward Bethesda's Children's Village; these funds will be used for the physical care of each child in the village, including food, housing, and education.

The owners of CUM have proposed an ongoing partnership with Bethesda throughout the next couple of years so that they might help to fulfill the commission of James 1:27—to look after orphans in their distress. We encourage all those living in South Africa to take advantage of this opportunity to support a Christian business that endeavors to assist in maturing believers as well as caring for the poor and vulnerable. Remember also to shop CUM for your Christmas gifts in December! Look for those items that have a Bethesda sticker on them from which proceeds will go to support the Bethesda children.

*"During December, CUM will be putting a portion of the profits from their Christmas sale items toward Bethesda's Children's Village."*

## Child Care Registration Update

Praise God with us that after five years of forming relationships with the Department of Social Development in our South African province of Gauteng, Bethesda has been granted Official Registration as a Children's Home! We are excited at the added opportunities that this may provide us in assisting more children in need of care. The South African government has told us in the past that Bethesda is 10 years ahead of them in developing a family-centered approach to child care; we are so thankful for the privilege of providing a good example of Christlike, family-style homes for children.

## From the Lips of Children

It was a frightening challenge that met house-mother Mamitjie Matjeni recently when her children brought home the new bikes that were given to the kids at Bethesda.

Director John Mixon was encouraging her to try her hand at riding the bike down the dirt road, and Mamitjie in-

sisted that she had no need to do that, exclaiming, "No!! I've never ridden a bike before!"

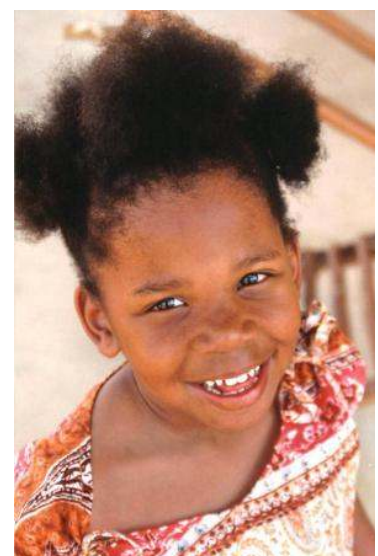
But as her 5-year-old daughter looked on, little Konyana felt a compelling need to sooth her mother's fears, as her mother had done for her so many times in the past years.

Breaking into the adult

conversation full of cajoling and laughter, Konyana called out in a serious and comforting voice, "No, no, don't worry mommy. You be OK. You can do it!"

We thank our dear children for their encouraging words... but Mamitjie still hasn't climbed on that bike.

☺☺☺



# BETHESDA OUTREACH MINISTRIES

Email: [bethesda-temba@boi.org](mailto:bethesda-temba@boi.org)

## South African Details:

Plot 13 Klipdrift  
PO Box 2643  
Hammanskraal  
0400

Phone: 012 711 0087  
Fax: 012 711 3472

## Bank Details:

Standard Bank, Brooklyn  
Branch Code: 011245  
Account Name: Temba Bethesda  
Outreach  
Account Number: 011818743

## United States Details:

Evangelical Baptist Missions  
Bethesda Outreach  
PO Box 781438  
Indianapolis, Indiana 46278  
Phone: 317 872 4488  
Fax: 317 872 4489

For U.S. online giving, go to  
[www.ebm.org](http://www.ebm.org)

We're on the Web!

[www.bethesdaoutreach.org](http://www.bethesdaoutreach.org)

## Managerial Staff:

John & Lois Mixon  
Klaas Mashabela  
Michele Geurink  
Ruth Rising  
Frans Manaka  
Dana Scott

## Houseparent Supervisor:

Fritz Shikwambane

## Houseparents:

Elias & Mamtjie Matjeni  
Jones & Lenah Phago  
Fritz & Masello Shikwambane  
Moses & Francina Mmotlana  
Frans & Salome Manaka

## Houseparent Assistant:

Christinah Moagi

## Maintenance/Grounds:

Albert Nkuna  
Elvis Raphakgadi  
Dorah Maluri

## Teachers:

Elizabeth Maboea  
Jacy Hobbs  
Tryphina Ledwaba

## Compassionate Care for African Orphans

Bethesda Outreach, a ministry of Evangelical Baptist Missions, was born in October of 2000 out of a desire to show compassion to children in Africa who had been orphaned by AIDS.

Bethesda's mission is to encourage and assist the local church in meeting the needs of orphan children that they may become disciples of Christ. That mission is accomplished through Bethesda's Children's Village, Orphan Care Resource Centre, and Hands of Mercy Ministry.

Bethesda Outreach Ministries is registered as a non-profit organization.

For more information, please visit our website at  
[www.bethesdaoutreach.org](http://www.bethesdaoutreach.org).

## Photo's: Administration Building Construction



## Opportunities

### Capital Project Needs

Children's Home  
Construction:  
R 1,320,000 (\$220,000)  
Village Road Construction:  
R 480,000 (\$80,000)  
Combie (2 needed):  
R 220,000 (\$36,670)/each  
Tractor with Equipment:  
R 120,000 (\$20,000)  
Security for Admin Bldg:  
R 10,000 (\$1670)

### Children's Home Needs

(for donors living in South Africa)  
Non-perishable food items



## Calendar of Events

### 2-14 November

Team from First Baptist,  
Danville, Indiana

### 18 November

Mini-Seminar: "Practicing  
Good Stewardship of Your  
Finances" taught by Mark  
Kington. Venue: Bethesda  
Training Centre  
ALL ARE WELCOME

### December

Shop CUM to support  
Bethesda!!

  
**Bethesda**  
OUTREACH  
Compassionate Care for African Orphans