

**BETHESDA
OUTREACH
MINISTRIES**

a ministry of
Evangelical Baptist Missions
ebm

Raised to Praise



September 2007 Newsletter

"For the eyes of the Lord are on the righteous and his ears are attentive to their prayer..."

I Peter 3:12a

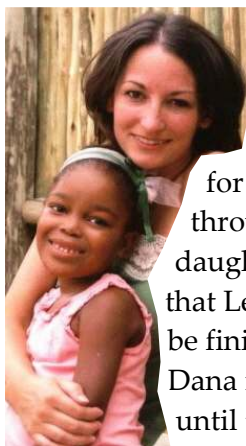
Inside this issue:

Coming to America	2
New Arrival!!!	2
From the Lips Of Children	3
The Influence Of an Intern	3
Tractor "Matching Fund" Opportunity	3
Opportunities	4
Calendar of Events	4

A Call to Prayer

It was a wonderful team season and at times it now seems very quiet around Bethesda. We are again thankful to our teams who sacrificed to come to Bethesda in order to help us accomplish the many projects that we never would have finished without their help.

This month I have a list of prayer items that we would like you to partner with us in praying about.



• Dana is a key Bethesda team member who has been held up in the States waiting for paperwork to come through for her adopted daughter Lerato. Please pray that Lerato's paperwork will be finished soon and that Dana is able to rest as needed until they return.

• Another item of prayer is regarding our finances. We now have 31 children in care. Anyone who has a family knows how costly it is to raise children. Bethesda is a costly endeavor, yet it is a Biblical solution to care for orphans within a family. Our commitment to the children and to our staff takes sacrificial giving by individuals and churches. Knowing when to expand a ministry is a difficult decision. We want to open home number five

because we now have the children to fill it. Please pray that God will send the funds to open this home.

• Back in April, we were promised grant money from the social development department; however, we have not yet received it. This is a large sum of money that we included in our budget. I know that we will receive this money, but in Africa we just do not know when it will be deposited. Unfortunately, we can not spend promised money. Please pray that God would work in the hearts of those who are holding up the process.

• Our upcoming board meeting will be held in the States this year in October. Please pray for wisdom as we make plans for the future.

• Please continue to pray for the Bethesda staff to have endurance and perseverance as they seek to reach the orphans for the glory of God.

Thank you for all your prayers for our children and team. And in closing, if you know of anyone who would like to support an orphan or family, please have them contact me.

Persevering with Great Joy,

John

FOR THE BETHESDA TEAM

Bethesda
OUTREACH

Compassionate Care for African Orphans



Coming to America

Bethesda's Annual General Meeting to be Held in the United States in October

Bethesda is excited to hold its Annual General Meeting in the United States for the first time ever! While we've enjoyed hosting the meeting on the Bethesda Village grounds for the past few years, we are eager for the opportunity to allow our South African board members to get into some American churches. The AGM will be held on 15-16 October, and below are some further speaking engagements in which our board members will be taking part. We invite all of you who live in the USA to take advantage of these opportunities to meet our board members that live outside of the USA, and ask them your questions about South African culture and the ministry of Bethesda.



October 14

Kossuth Street Baptist Church
2901 Kossuth Street
Lafayette, IN 47094
Service times: 8am, 9:30am, 10:45am



October 14

Calvary Church of Valparaiso*
1325 E. Evans Avenue
Valparaiso, IN 46168
Service times: 9:30am, 11am
*Also hosting a "Friends of Bethesda"
forum in the afternoon;
phone 219-462-4026 for details



October 19

Crossroads Bible College
601 N. Shortridge Road
Indianapolis, IN 46219
9am-12:30pm, followed by free luncheon
To register, email Roger Cryan at
rcryan@ebm.org

October 21

Calvary Baptist Plainfield
1290 South Center Street
Plainfield, IN 46168
Service times: 9am Sunday School,
10am Service



New Arrival!!!

Bethesda has had the privilege of accepting yet another member into our family! One-year-old Angelina arrived in August to join her older brother and sister, Jack and Mpho, who were placed at Bethesda in June of this year (pictured left). She is a pudgy little girl who loves to eat anything that is set before her, and enjoys the interaction of a daddy, which she has never had before. Mpho, Jack, and Angelina are temporarily in the home of Fritz and Masello Shikwambane until such a time as we can open a fifth child care home at Bethesda. Please pray for Fritz and Masello as they seek to minister to the needs of multiple children; and pray for Angelina, that she would meet her developmental milestones and that she would learn the love of Christ through the actions of her family at Bethesda.

The Influence of an Intern

Jabulane Christian Academy has been blessed with many interns this year. Our two most recent were Samantha Smith who stayed for two months, and Elise Galli who stayed for one month. During this time, they did extensive tutoring with Mpho and Moeletsi, two of our most recent additions to Bethesda.

Eight-year-old Mpho came to us in June with virtually no academic background. She was struggling to count beyond four or recognize letters and their sounds. To complicate it even further, she knew almost no English. Both interns spent a lot of time working with her over the course of this last term; by the time Elise left to return to the USA, Mpho was able to say the alphabet, write the letters, and say and identify all of their sounds! What a lot of progress!

Besides having a tremendous influence on her academically, Elise made a huge impact on Mpho emotionally; there were many tears when Elise had to say goodbye – tears in Elise's eyes as well as in Mpho's. God is so gracious to give us these short-term interns and they have a great influence on our children in their time here.

Recently we were blessed with a new intern! Miss Nichole Finklea arrived yesterday from India after spending two and a half years teaching English in Korea. She is a vibrant young lady with a very



Mpho (left) with Olinda

positive outlook on all that God is doing in her life. She will be assisting in the school for the next three months in addition to helping some of our houseparents in the children's homes. Please pray that the time she spends here will change her life and that we will be a great blessing to her even as she blesses our staff and children.



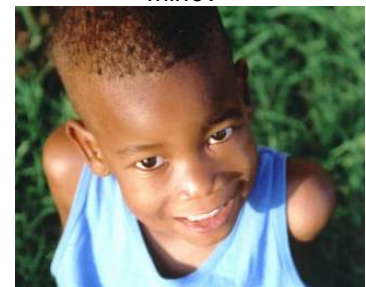
Nichole Finklea

From the Lips of Children

Recently the children in Grades 4-6 had an assignment to write a poem about a family member, using a metaphor. The following is a poem by Siphon, in Grade 6, about his 5-year-old brother Peter.

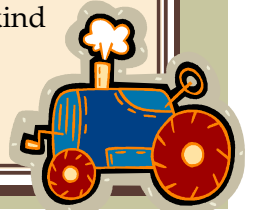
"Hyena" by Siphon

*My little brother likes to be crazy
He is so very much noisy
He doesn't like to be lazy
The way he is so crazy
I call him a hyena because he
laughs like a hyena
He will make a joke
And laugh at you for a long time
So that a lion can chase him
And when a lion chases him he will
run between trees
And he will tease you
That he got something that he
needs
And he will laugh at you and show
you his chicken meat
He got that you had
And he will sprint
Would you like this brother of
mine?*



Tractor "Matching-Fund" Opportunity

Are you looking for a practical way to help Bethesda's Children's Village? The village tractor, which is used for many maintenance jobs including cutting back the tall bushveldt to keep snakes away from the children and grading our gravel roads, is in great need of replacement. A kind supporter has offered a \$10,000 matching gift toward the tractor if we can raise the other \$10,000 needed. To give toward this fund, please use the details on the left-hand side of page 4 of this update. Include a note designating the gift for "Bethesda Tractor Fund."



BETHESDA OUTREACH MINISTRIES

Email: bethesda-temba@boi.org

South African Details:

Plot 13 Klipdrift
PO Box 2643
Hammanskraal
0400

Phone: 012 711 0087
Fax: 012 711 3472

Bank Details:

Standard Bank, Brooklyn
Branch Code: 011245
Account Name: Temba Bethesda
Outreach
Account Number: 011818743

United States Details:

Evangelical Baptist Missions
Bethesda Outreach
PO Box 781438
Indianapolis, Indiana 46278
Phone: 317 872 4488
Fax: 317 872 4489

For U.S. online giving, go to
www.ebm.org

We're on the Web!

www.bethesdaoutreach.org

Managerial Staff:

John & Lois Mixon
Klaas Mashabela
Michele Geurink
Ruth Rising
Frans Manaka
Dana Scott

Houseparent Supervisor:
Fritz Shikwambane

Houseparents:

Elias & Mamtjie Matjeni
Jones & Lenah Phago
Fritz & Masello Shikwambane
Frans & Salome Manaka

Houseparent Assistant:

Christinah Moagi

Maintenance/Grounds:

Elvis Raphakgadi
Dorah Maluri

Teachers:

Elizabeth Maboea
Jacy Hobbs
Tryphina Ledwaba

Compassionate Care for African Orphans

Bethesda Outreach, a ministry of Evangelical Baptist Missions, was born in October of 2000 out of a desire to show compassion to children in Africa who had been orphaned by AIDS.

Bethesda's mission is to encourage and assist the local church in meeting the needs of orphan children that they may become disciples of Christ. That mission is accomplished through Bethesda's Children's Village, Orphan Care Resource Centre, and Hands of Mercy Ministry.

Bethesda Outreach Ministries is registered as a non-profit organization.

For more information, please visit our website at
www.bethesdaoutreach.org.

Opportunities

Capital Project Needs

Children's Home
Construction:
R 1,320,000 (\$220,000)
Village Road Construction:
R 480,000 (\$80,000)
Combie (2 needed):
R 220,000 (\$36,670)/each
Tractor with Equipment:
R 120,000 (\$20,000)

Children's Home Needs

(for donors living in South Africa)
Non-perishable food items



Calendar of Events

8 September—10am

ALL WELCOME—mini-seminar by John Mixon, topic "How to Begin an Orphan Care Ministry"

14 October

Bethesda Board at
Kossuth Street Baptist
Lafayette, IN
and Calvary Church
Valparaiso, IN

15-16 October

Annual General Meeting

19 October

Bethesda Board at
Crossroads Bible College
Indianapolis, IN

21 October

Bethesda Board at
Calvary Baptist
Plainfield, IN